

# USA

## Dust Guard



Div. of Scott Electric • 412-605-2992 (#Direct)

# Portable Mixers

## Mix, Transport & Pour

*Directly onto the Floor*

Mortar, Concrete, Adhesives, Grout, Coatings, Paint  
Self-Leveling Cements, Low-to-Thick Viscosities

**Portable, Cleaner, Faster, Easier & Dust Control**

### Hippo PortaMix — **Pourable Materials, No Aggregate**

- ! Mix compounds while lid is closed - reduces splatter, attach a vacuum to reduce airborne dust
- ! 3-Speed, 20A, 1800 Watt Motor: 110 RPM, 190 RPM, 280 RPM
- ! **Bowl Capacity: (6) 50# Bags with Water**
- ! Includes: Mixing Motor, bucket, removal liner, 2-paddles
  - " TW225 Paddle: 9" x 8" x 27" for plasters, concrete, mortar, resins, tile adhesives (half batches, 2-3 bags)
  - " TW225D Paddle: 9" x 15" x 27" long for self-leveling compounds, screeds, paints, plasters, epoxy (full batches, 5-6 bags)
  - " 9" wide helix & side bars lift & shear the product quickly & efficiently to produce excellent mix consistency and thorough mixing. 9" diameter increases peripheral speed to eliminate high-RPM mixing & prevent premature curing

#### FEATURES

- ! 23 gallon - mix, transport & pour up to 6-50 lb bags - see Transport Cart
- ! Ideal for mixing in bulk and dispensing into small containers - see Transport Cart
- ! High-Torque, Low RPM, 15 Amp 2-Gear Motor
- ! 'Easy-Roll Trolley' and balanced 'Easy-Tilt Cradle' allow for pouring and spreading the material at the same time
- ! Specially shaped mixing bowl eliminates pockets of unmixed product
- ! Resilient, pliable liner is durable, easily cleaned
- ! Dust extraction port for vacuum connection.



Model: PMH80F-DC3  
Call for Price



PMH80X-DC3  
Call for Price



#### ACCESSORIES

PH705 - Removable Liners [Call for Price](#)

> Mix multiple batches easier and faster with removable liners

> Resilient, pliable liner is easy to clean, extends life of bucket.



PMP80 - Transport Cart [Call for Price](#)

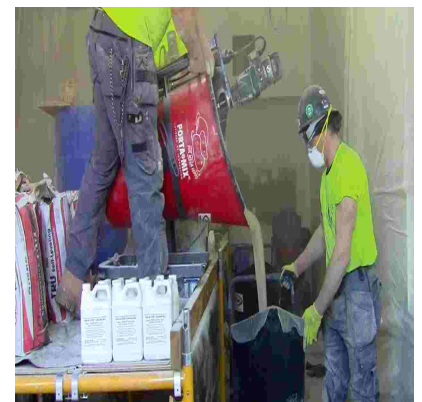
> Move and pour material faster and easier

> 360° maneuverability

> HD lock-on swivel casters

> Large handle for easy steering & pouring

> Transports a full 23 gallon liner, eliminates individual buckets



## Pelican Mixing Machine — Pourable Materials, No Aggregate

- ! Mix compounds while lid is closed - reduces splatter, attach a vacuum to reduce airborne dust
- ! 2-Speed, 14.5A, 1800 Watt Motor: 0 - 250 RPM, 0 - 580 RPM
- ! Mixer can also be used for hand mixing
- ! **Bowl Capacity: (3) 50# Bags with Water**
- ! Includes: EHR 23/2.4 mixing drill, 2 paddles (TK200P, MG160), transport cart, canister, liner, canister cover with hinged lid and motor mount
  - " Replacement Helical Paddle #TK200P (for machine) ..... Call for Price
  - " Replacement Helical Paddle #MG160 (for hand mixing) .....
  - " Replacement Hand Mixer #EHR 23/2.5S (1800 lbs/hr output) .....



Model: PMP80DC-23  
Call for Price

### FEATURES

- ! 23 gallon - mix, transport & pour up to 3-50 lb bags - see Transport Cart
- ! High-Torque, Low RPM, 14.5 Amp Variable-Speed 2-Gear Motor
- ! 'Easy-Roll Trolley' and balanced 'Easy-Tilt Cradle' for pouring and spreading the material at the same time
- ! Specially shaped mixing bowl eliminates pockets of unmixed product
- ! Resilient, pliable liner is durable, easily cleaned
- ! Dust extraction port for vacuum connection.



### ACCESSORIES

PH705 - Removable Liner [Call for Price](#)

- > Mix multiple batches easier and faster with removable liners
- > Resilient, pliable liner is easy to clean, extends life of bucket.



PMP80 - Transport Cart [Call for Price](#)

- > Move and pour material faster and easier
- > 360° maneuverability
- > HD lock-on swivel casters
- > Large handle for easy steering & pouring
- > Transports a full 23 gallon liner, eliminates individual buckets



## Twin Mix 1800 — Concrete Mixing, Low- to Thick Viscosity Materials

- ! Drill motor for much thicker materials
- ! Mix compounds while lid is closed - reduces splatter, attach a vacuum to reduce airborne dust
- ! Material pour chute for dust-free filling of material with vacuum connection
- ! One Mixing Motor - two paddles rotating in opposite directions ~ thoroughly combines compounds into a homogeneous, lump-free mixture
- ! 2-Speed, 15A, 1800 Watt Motor for the Thickest Material: 250 / 450 RPM
- ! Scraper Paddle Speed: 20 / 36 RPM
- ! Handles and large wheels for ease of mobility
- ! **Bowl Capacity: (3) 50# Bags with Water**
- ! Includes: Mixing motor on stand, bucket, mixing rod, mixing paddle, "side" pour cart
- " Replacement Helical Paddle #31452 ..... **Call for Price**
- " Replacement Scraper Paddle #31451 .....



Model: TWIN MIX 1800TSD  
**Call for Price**

### FEATURES

- ! 17 gallon - mix, transport & pour up to 3-50 lb bags
- ! High-Torque, Low RPM, 15 Amp 2-Gear Motor - very high mixing power
- ! 'Easy-Roll Trolley' and balanced 'Easy-Tilt Cradle' allow for pouring and spreading the material at the same time
- ! Specially shaped mixing bowl eliminates pockets of unmixed product
- ! Resilient, pliable liner is durable, easily cleaned
- ! Dust extraction port for vacuum connection.



### ACCESSORY

Easy transport over rough terrain.



32333000 - Big Wheel *Front Pour*  
Transport Cart, 17-Gallon **Call for Price**



#32341 - Replacement 17-Gallon  
Bucket, fits both Transport carts  
**Call for Price**



#32332000 - 4-Wheel *Side Pour*  
Transport Cart, 17-gal. **Call for Price**

